



# COMUNE DI COMANO - LOC. MONTE CASTELLARO DI PROTA

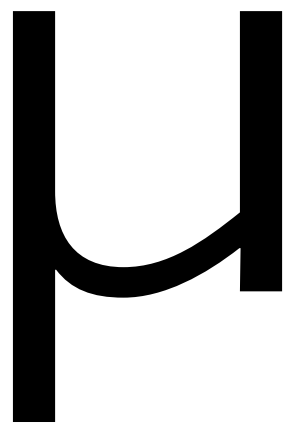


CMLUNIGIANA  
AREA TECNICA-AMBIENTALE

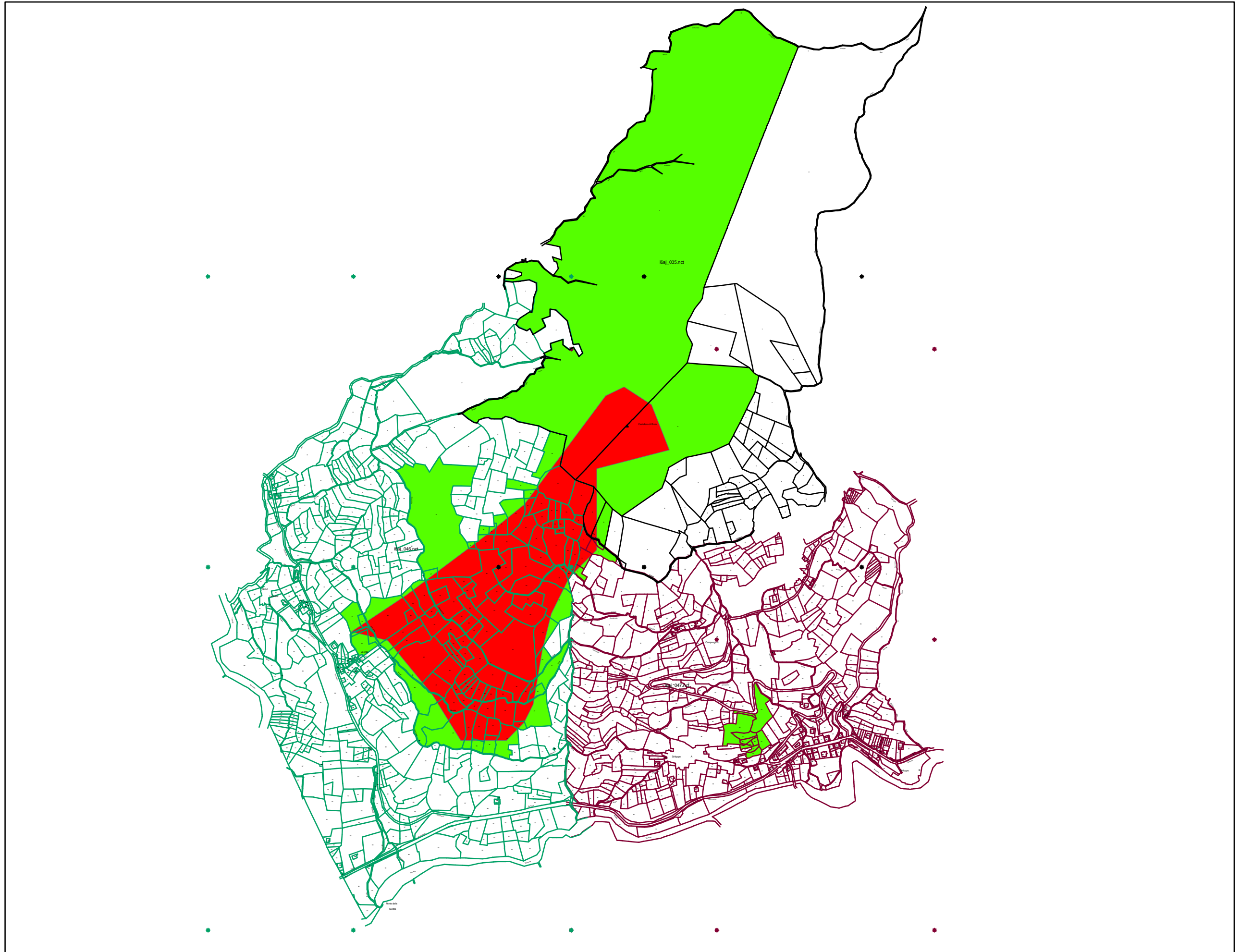
## LEGENDA

-  Area incendio 2006
-  CATASTO

FOGLIO CATASTALE N° 35  
46  
47



1:10.000



0 155 310 620 930 1.240 Meters